

# Overview of Employment Services



# Welcome!

Please:

Turn off gadgets or turn on silent mode

Listen and show respect to the speaker

If you have questions, please use the chat box and we will answer these throughout the session

If you choose to have your camera on, everyone can see you

You'll be asked to provide some information at the end of the session for attendance purposes



***Now Let's Get Started...***

# Why are we here?

- What is Ontario Works?
- What is a Participation Agreement?
- What Employment Services are available to help me?
- What Benefits are available to me as a participant in Ontario Works?



# What is Ontario Works?

An employment program providing:

- Employment Assistance
- Financial Assistance
- Health Benefits



# Path to Employment

1

## Education

Ontario Works supports and encourages individuals to obtain Grade 12 OSSD, GED, ACE, LBS, ESL classes.

2

## Referral to Employment Agency

Pathways, WIL, YOU, Goodwill, LEADS

3

## Job Search Requirements



# EDUCATION

- ✓ **LEAP- Learning Earning and Parenting** program that focuses on young parents without a Grade 12
  - Mandatory for Ages 16 and 17 years old
  - Optional for 18 to 25 years old
  - \$500 Incentive upon successful completion of the program
- ✓ **Educational Interview** - If you are unsure of next steps for school, you can request a referral to Literacy Link South Central for an educational interview.
- ✓ Talk to your caseworker if you are attending or planning to attend school as you **MAY** be eligible for income exemptions



# Don't know where to start?

Try **[www.learningforlifetool.ca](http://www.learningforlifetool.ca)** for a free, online, searchable, decision-tree based catalogue of adult education or training opportunities.

The tool will ask a series of questions and recommend local adult education and training options based on your answers.



# Better Jobs Ontario (Second Career)

- Are you thinking of a new job and need retraining?
- Have you been laid off?
- Maybe you haven't been laid off but have been unemployed or underemployed for 6 months or longer?

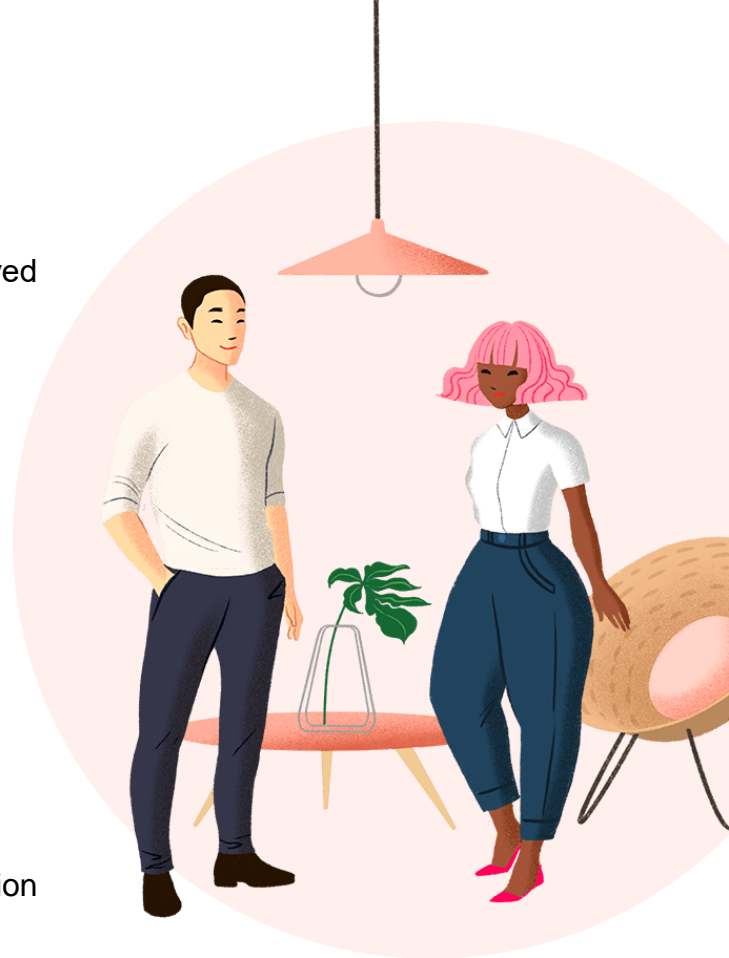
## **YOU MIGHT BE ABLE TO RECEIVE FINANCIAL SUPPORT TO COVER:**

- ✓ Tuition and related costs for a program that is 52 weeks long
- ✓ Living expenses
- ✓ Childcare
- ✓ Transportation
- ✓ Books
- ✓ Up to \$28000 is available to help you!!!!

## **IN ORDER TO APPLY TO BETTER JOBS ONTARIO:**

- You'll need work with an Employment Ontario agency
- Trained staff will help you decide if this program is right for you
- Staff will help you with the research and to complete and submit your application

This is a great opportunity to learn new skills that can be a fresh start into a new career or job that is in demand





# What do Employment Service Agencies help with?

**Resumes**

**Job  
search**

**Training or  
updating of  
skills**

**Supports to  
find and  
maintain  
employment**



# Your First Stop:

## Fundamental Employment Services

- ✓ Develop an Employment Action Plan (EAP)
- ✓ Identify barriers
- ✓ Receive assistance in determining the steps you can take to move forward
- ✓ Variety of programs to address personal, educational and skill building goals
- ✓ Workshops available (resume, interviews, networking, job search skills, First Aid/CPR, WHMIS, etc.)

Develop a personal plan that suits your goals and your life



# Skills Training

Find Skills Training that  
matches your goals!

Improve your skills  
and employability

A work experience  
co-op to put your  
skills into practice

Blend of in class and  
hands on training  
program to gain new  
marketable skills



**\*\*Skills Training Programs are full time programs that range from 8-16 weeks\*\***

# Skills Training Options

## Pathways

- ✓ Construction Technology Training
- ✓ Property Maintenance Training
- ✓ Logistics and Manufacturing Training
- ✓ Administrative and Clerical Training

## Goodwill Career Centre

- ✓ Expert Customer Service training
- ✓ Hands on Hospitality

## Youth Opportunities Unlimited

- ✓ Food and Beverage Services
- ✓ Light Industrial – Recycling
- ✓ Manufacturing - Wood Products
- ✓ Sales and Marketing



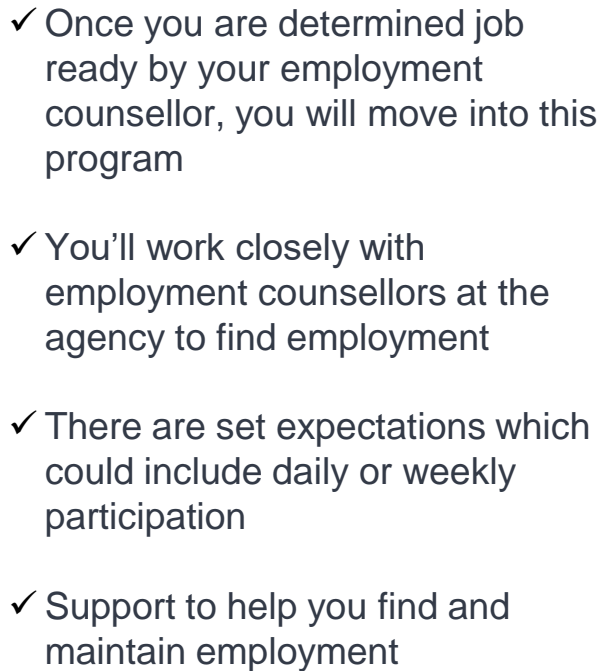
# Other Training & Special Certification Available

Safe Food Handling	Smart Serve	First Aid/CPR	Forklift
Working at Heights	London Training Centre – local food skills	Wheable - PSW	Pre-Apprenticeships
Computer Skills			



Speak to your caseworker about other new and upcoming training programs

# Employment Search, Placement and Retention

- 
- ✓ Once you are determined job ready by your employment counsellor, you will move into this program
  - ✓ You'll work closely with employment counsellors at the agency to find employment
  - ✓ There are set expectations which could include daily or weekly participation
  - ✓ Support to help you find and maintain employment

# Canada

## EMPLOYMENT ONTARIO

# Ontario

- Free workshops to identify and build your skills and expand your networks
- Career exploration
- Advice and referrals to other community services
- Job search assistance
- Resource centers (computer, phone, fax, printing)
- Researching/accessing apprenticeships
- Better Jobs Ontario application assistance
- And much more!!



Canada 

EMPLOYMENT  
ONTARIO

Ontario 



NOKEE KWE

COLLÈGE **BORÉAL**  
éducation • innovation • recherche





# Self -Employment

- ✓ Are you currently receiving Ontario Works assistance?
- ✓ Do you have a great business idea along with the skills and experience needed to get started?

This program provides business planning workshops and on-going advisory assistance along with Ontario Works income support while you start and grow your business.

## **Jobs that are not considered approved Self Employment activities:**

- Uber driver
- Taxi driver
- Delivery services
- Commission sales
- Subcontractors working for other companies

**If you are pursuing these jobs, you must also be willing to participate in other full-time employment activities**



# Participation Agreement

A legal document that outlines the activities in which you have agreed to participate.

- ✓ All participants 18 years or older on Ontario Works are required to complete a participation agreement.
- ✓ The activities listed will help you become more employable with the goal of finding and keeping a job.
- ✓ Participating in activities means you will be eligible for additional benefits (such as a bus pass or clothing).
- ✓ If you have concerns about participating, please speak to your caseworker.



# Restrictions and Limitations on Participation

**Please speak with your caseworker if you have:**

- Physical challenges that affect working
- Medical conditions that limit the kind of work you can do
- Personal circumstances that impact working

**We will work with you to find the best agency to assist you!**

- Have a qualified medical practitioner complete a Limits to Participation form
- Restrictions will be taken into consideration when completing your Participation Agreement



# Participation Expectations

## Participation is mandatory

- Your caseworker will work with you to set goals based on your unique situation
- Failure to make reasonable efforts to participate, accept or maintain employment may affect your eligibility for assistance. This is referred to as “non-compliance”.
- The penalties for non-compliance range from verbal warnings to withholding assistance for periods of 1 month to 3 months
- Your caseworker is here to help. If you are experiencing barriers to participating or accepting and maintaining employment, please reach out and we will work together to help you be successful.



# Supports Available To Help You On Your Journey



# Counselling

Counselling is helpful to address many things such as anxiety, trauma, depression, motivation, grief, identity, communication skills and more

Ontario Works will cover the cost of short-term counselling services through:

- **Daya** (333 Dufferin Ave, 519-434-0077 ext. 1234)
- **Family Service Thames Valley** (125 Woodward Ave, 519-433-0183 ext. 605)

FREE credit counselling is also available through the Credit Counseling Society 1-888-527-8999

For Mental Health Crisis (urgent service) we recommend Reach Out offered by Canadian Mental Health Association (1-866-933-2023 or Text service 519-433-2023, Web Chat <https://reachout247.ca/get-help/web-chat/>)



# ADDICTION SUPPORTS

If you are in crisis,  
please call:

Reach Out 24/7:  
519-433-2023 or  
1-866-933-2023

The Support Line:  
519-601-8055

Or Attend Walk-In 24/7  
Crisis Centre:  
648 Huron St. London

Withdrawal Management  
Centre:  
519-432-7241  
281 Wellington St

**Due to COVID, services are being offered by phone, web-based resources and scheduled appointments.**

- ✓ Phone – 519-673-3242 ext. 222
- ✓ Email – [intake@adstv.ca](mailto:intake@adstv.ca)

**Monday – Friday**

10:00 am – 3:00 pm

**All services are free and confidential**

**[www.adstv.ca](http://www.adstv.ca)**



- Are you feeling stuck?
- Do you want to learn how to make changes by setting personal goals to move forward?
- Join a support network to give you the resources to realize your hopes and dreams
- Through this 12-week virtual program, you will identify your strengths to build a stable future for you and your family
- Meet twice per week via zoom for approximately 2 hours per session
- Technology provided



# Housing Supports

**If you are at risk of being homeless or worried about eviction:**

Housing Stability Bank – Offers interest free loans to assist with rental and utility arrears as well as last month's rent.

- Call: (519) 964-3663 ext. 300
- Email: [housing@centreofhope.ca](mailto:housing@centreofhope.ca)
- Walk-in: 281 Wellington St., London, ON

**Access the Help Yourself through Hard Times booklet through this link for information on basic needs services for London and Middlesex County**

**[https://informationlondon.ca/29/Help\\_Yourself\\_Through\\_Hard\\_Times/](https://informationlondon.ca/29/Help_Yourself_Through_Hard_Times/)**

# Discretionary Benefits

Dental care  
for adults

Healthy Smiles  
dental program  
for children  
under 18

Vision care

Household  
furniture

Baby  
supplies

Additional items issued  
by caseworker (diabetic  
supplies, incontinence  
supplies, special diet)



# Child Care



- ✓ Childcare while you are participating in employment activities outside of the home
- ✓ May include licensed care, summer camps and informal childcare
- ✓ If you are no longer eligible for Ontario Works assistance due to income, you may qualify for subsidy

# CITY OF LONDON

## RECREATION

**PlayYourWay!**

- ❖ The Play Your Way Financial Assistance Program is the City of London's recreation subsidy program
- ❖ Financial support is available to access recreation programs, memberships and admissions to drop-in programs at City of London recreation facilities
- ❖ Each family member covered under the applicant's benefits is entitled to \$300 in funding per person to use over the next 12 months from the date of approval
- ❖ If you are receiving Ontario Works or ODSP you are automatically eligible to receive funding after providing a few details and some information
- ❖ Thousands of recreation opportunities are just a click away!!!

There's something for everyone!!!

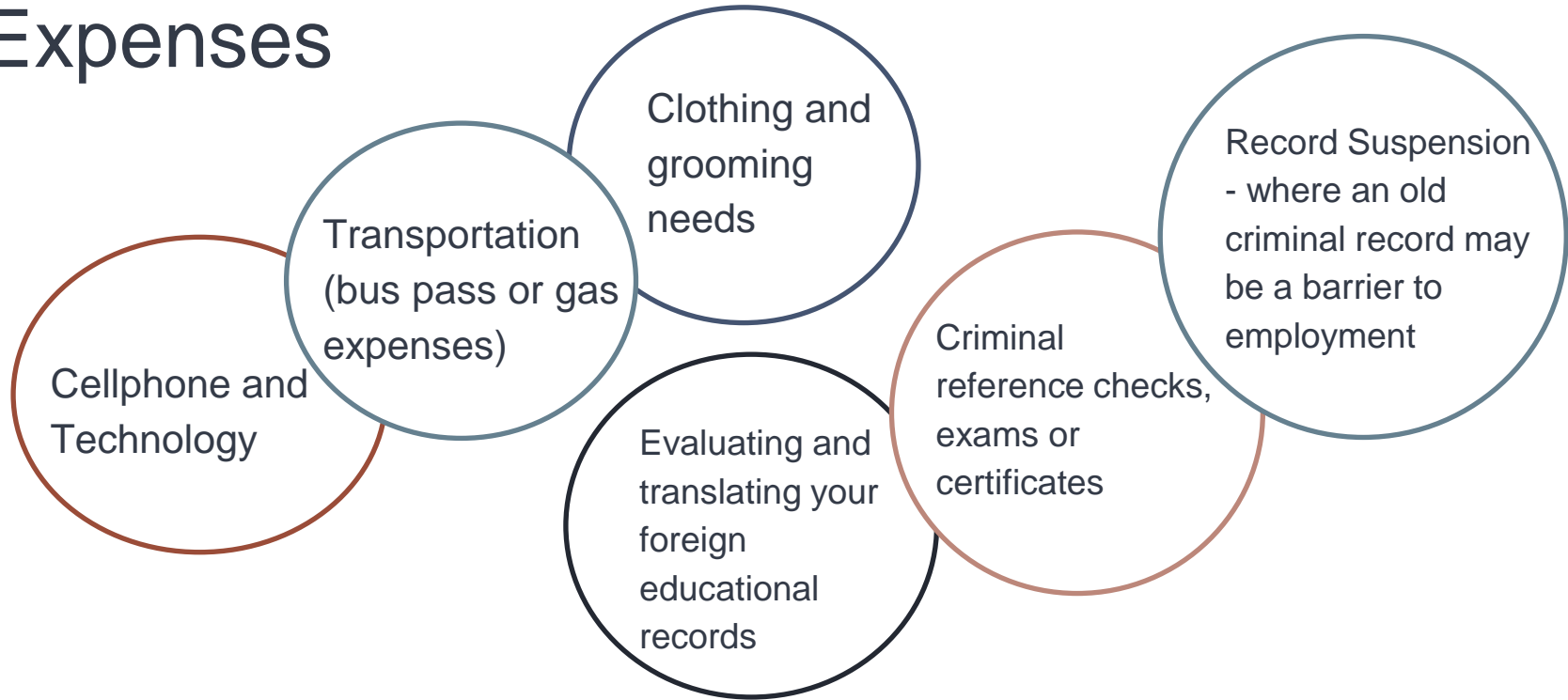
<http://www.london.ca/playyourway>

**Email:** recreation@london.ca

**Phone:** 519-661-5575

# Assistance with Employment Related Expenses

If you are considering or participating in employment activities, speak to your caseworker about accessing extra benefits you are eligible for. Some examples are:



# Other Employment Benefits

## **Other Employment and Employment Assistance Activities Benefit (\$253/year)**

- ✓ Assist with costs for new employment activity or starting part-time employment (under 30 hours/week)

## **Full Time Employment Benefit (up to \$500/year)**

- ✓ Assist with costs associated with full-time employment (30+ hours/week)
- ✓ Must be active on Ontario Works for three full months

## **Have Prescription Drug Costs?**

If you have high health costs and no longer qualify for Ontario Works because of your income, speak to your caseworker. Depending on your needs, you may be eligible for some help through:

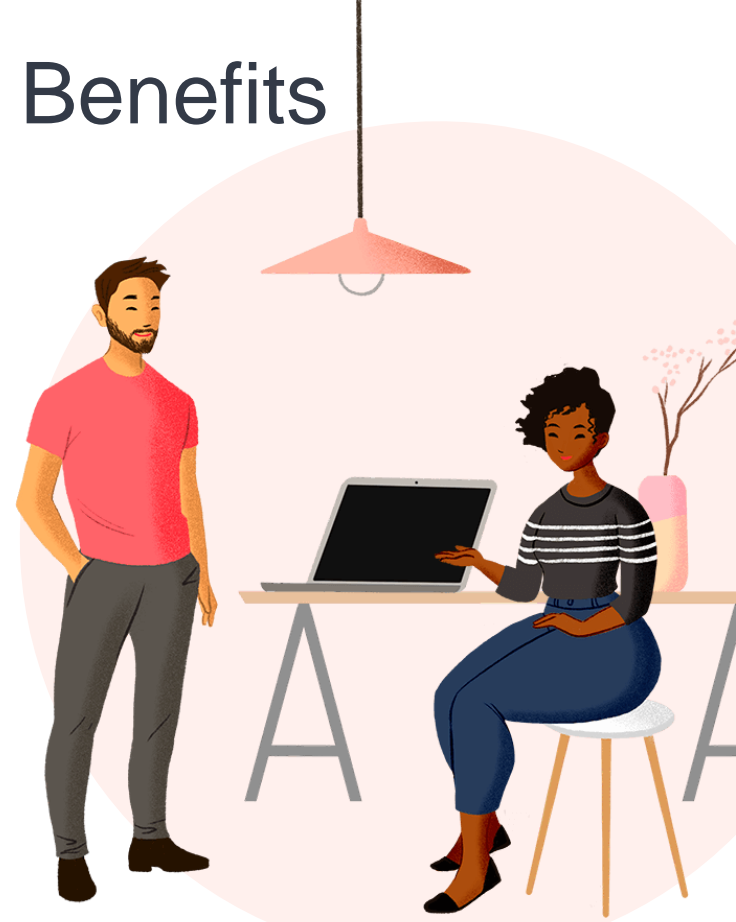
- ✓ Extended Health Benefit (EHB) or
- ✓ Extended Employment Health Benefit (EEHB)



# How to Request Employment Benefits

Estimates need to be submitted in writing and include the following information:

- ☐ Name
- ☐ Member ID Number
- ☐ Items requested
  - ☐ Store name
  - ☐ Cost of item
- ✓ Submitted through My Benefits or on a piece of paper
- ✓ You must be doing an activity approved by your caseworker to qualify (e.g., job searching, employment agency)
- ✓ Typically, we do not reimburse funds already spent



# Earnings While Receiving Ontario Works

Working even a part time, casual or short-term job will give you **more money** than just Ontario Works

- Not all your earnings will be deducted!
- Exemptions start after the 3<sup>rd</sup> month of OW entitlement
- The first \$200 you earn is exempt from deductions
- After that 50% would be deducted from your cheque





# Income Report Statement

- If you earn income and don't use My Benefits, please submit a completed and signed Statement of Income to your caseworker as soon as possible after the 16<sup>th</sup> of the month
- Can be dropped off or send a picture of both sides of the income statement form
- Keep copies of any paystubs for that period
- Speak to your Caseworker if you are unclear about what income to report

Ontario

Statement of Income

CLIENT NAME (PLEASE PRINT CLEARLY)	MEMBER ID	OFFICE	CASEWORKER	INCOME FOR	
				D M Y	D M Y
		SLCC		16-06-2019	TO 15-07-2019

DD MM YYYY  
16-07-2019

Mail this form to the address\* below as soon as possible after:

Social Services-South London  
Community Centre  
1119 Jalna Boulevard  
London Ontario N6E 3B3

**IMPORTANT NOTICE:**  
As outlined on the Rights and Responsibilities form you signed, it is your legal obligation to report changes in living arrangements, shelter costs, family size, assets or income\*.

\*Examples of income may include:

- Earnings
- Employment Insurance
- Training allowance
- Support payments
- Roomers / Boarders
- Rental income
- Self-employment
- Interest/Annuities
- Gifts / Windfalls
- Trust / Inheritance
- Pensions / Insurance
- Loans / OSAP
- CPP / OAS / GIS / Gains
- WSIB
- Other income

☐ NO, I do not have any changes. ☐ YES, I have a change(s) and will contact my caseworker as soon as possible.

List changes:

I declare that all the information reported on BOTH sides of this form is true to the best of my knowledge and belief and no information or income has been withheld or omitted.

Signature (Recipient / Trustee) \_\_\_\_\_ Date \_\_\_\_\_ See reverse side.

COL form No. 0901w(2019.10)

Payment Date

Payment Source

Gross

Net

Attending school?

Unless otherwise requested, you have two options: (1) Attach your pay stubs and receipts OR (2) Fill in the information below and keep your pay stubs and receipts in case we ask to see them in the future.

Who received the money? Client (C), Spouse (S), Dependent (D)

Date Received			Source of income or earnings	Gross	Net	Attending school full time?	Deductions (enter only if applicable)		
DD	MM	YYYY					Child or spouse's support payments	Other payments to repay a debt	
						Yes	No		

Child Care Expenses

Child Name	Child Care Provider Name	Licensed?		Amount
		Yes	No	
				\$
				\$

Notice with Respect to the Collection of Personal Information  
The information on this form, is collected under the legal authority s.7(3) of the Ontario Works Act, S.O. 1997 c.25, sched A, for the purpose of administering the OW Program. For more information, contact your nearest Social Services office.  
Accessible formats and communications supports available on request to your local Social Services office.

Child Care Expenses

# My Benefits App

A flexible way for you to receive, manage and report information to your caseworker.  
You can access your social assistance information online from any device at your convenience.  
It's Fast, Easy and Secure!!!

View payment  
information including a  
breakdown of each  
payment

Report your income

Use the messaging  
feature to talk back  
and forth with your  
caseworker

View your profile  
information such as  
your phone number,  
email address and  
household members  
on your file

Report address and  
phone number  
changes

View letters that our  
office sends you

Upload documents  
that need to be sent in  
for review

**Register today at [ontario.ca/MyBenefits](https://ontario.ca/MyBenefits)  
For more information call 1-888-999-6130**

# What are my responsibilities and commitments?

Declare ALL income and assets

Report any changes regarding family members or living arrangements

Actively Participate

- Job searching – maintaining records
- Attend employment activities (includes school or training)

Attend ALL scheduled meetings with your caseworker and any agency you are working with!

PLEASE advise of any changes to your email address and phone numbers so we can stay connected with you



# Your Appeal Process

- If you do not agree with a decision made by your caseworker, you can appeal.
- All appeal requests must be made in writing, signed and submitted within 30 days of the decision.



# We are here to help!

- ✓ You, your Caseworker and your Employment Counsellor are a team!
- ✓ We want to make sure that you have all the resources you need!
- ✓ If you need anything, please ask your Caseworker...the worst thing we could say is no...

**But**...we might be able to say... **YES!!!**



Before we move onto questions, you are required to “message the host” through the chat box feature with the following information:

- your name as it appears on your cheque
- Member ID#
- and/or your Date of Birth

**\*\*This information will allow us to notify your caseworker that you attended today’s session and avoid your cheque being suspended\*\***



# THANK YOU, MERCI!



## ANY QUESTIONS?